



## Joseph Kaspar's philosophy

The Lattice structure is unique in combining strength, versatility and beauty.

It is ubiquitous in the very molecular fundamentals of atomic structures, exhibits long range order, symmetry and is the foundation of the biggest constructions ever made. It is found in the anatomy of plants as well as animals and humans.

Over history man has always relied on the particular versatility and strengths of the lattice principle. The application in art-work and construction goes back to the ancient Egyptians, Nubians, Chinese and Greeks. Examples include most renown temples, ancient shipbuilding, the longest bridges, the highest skyscrapers and the fastest cars.

JosephKaspar® merged the lattice principles for the first time into a new proprietary line of revolutionary Swiss watches. The beauty of this unique design is complemented by the superior strength and lightness of the watch case.

It is this strong visual context that provides the brand with an unmistakable identity. Let yourself be surprised by this first step in an evolutionary path of JosephKaspar®.

The following images show how this concept is applicable in many ways.



Works of the Strand Bridge (taken in the Year 1815).  
Drawn by Edw. Blore. Engraved by George Cooke.  
Jan. 1, 1817



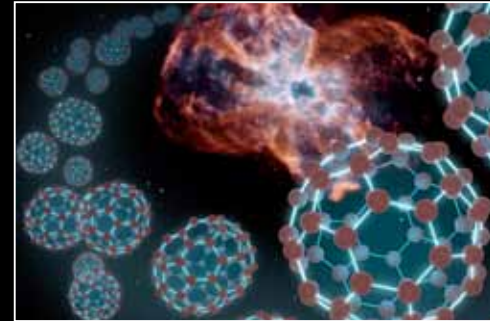
Sydney Harbour bridge  
1932 by Dr. John Job Crew Bradfield



Lamborghini Countach chassis  
1974 - 1990 designed by Marcello Gandini  
© Ozone Auto Body



Eiffel tower  
1889 by Gustave Eiffel



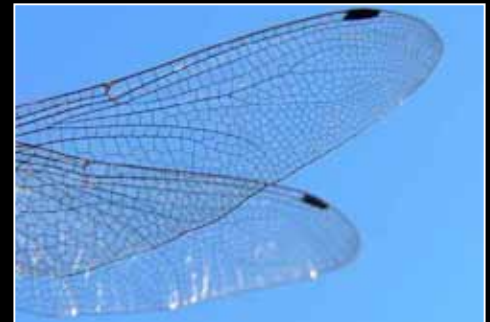
C60 Molecule Structure  
© Illustration credit: NASA/JPL-Caltech/T. Pyle (SSC)



Ducati ST3 Chassis  
© 2007 Verticalscope Inc



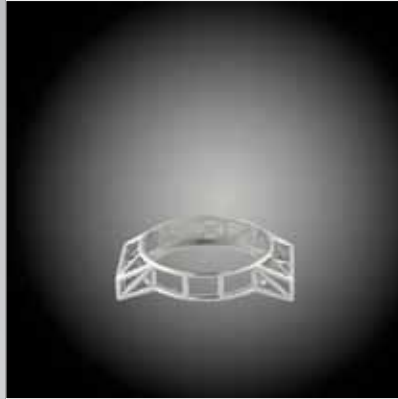
Birds nest - Beijing Olympic Stadium  
2008 by Herzog & de Meuron, Ai Weiwei and  
Li Xinggang



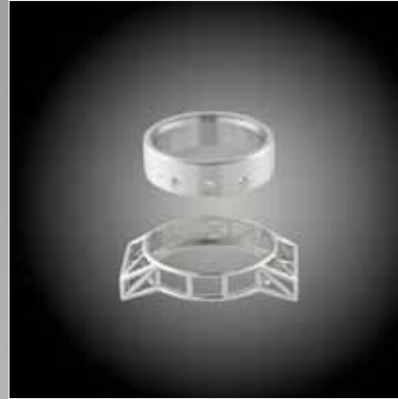
Dragonfly wings

# The Lattice Principal

Round Chassis



Container + Round Chassis



Container Descending into Chassis

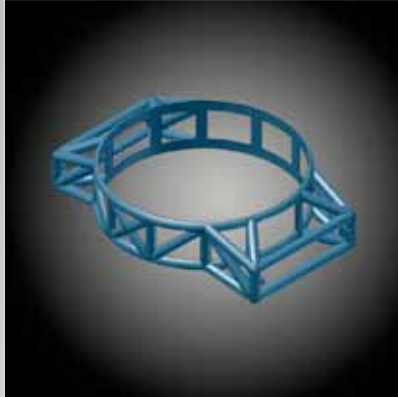


Container + Round Chassis Assembled

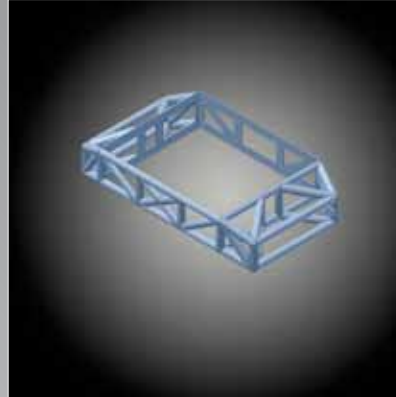


## Lattice Chassis' Shapes and different Containers

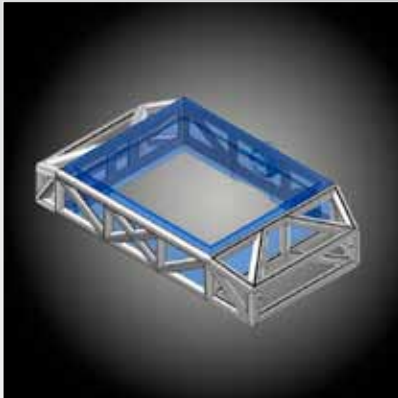
Round Chassis



Rectangular Chassis



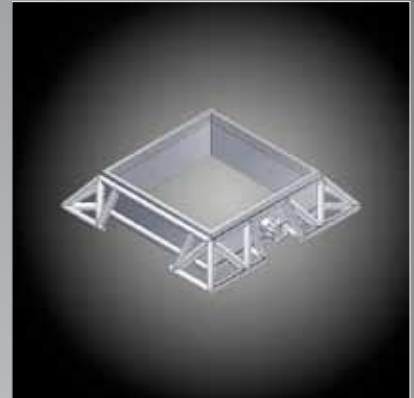
Rectangular Chassis  
and Sapphire Container



Tonneau Chassis and Container



Square Chassis and Container





Stop Watch Drawing  
and Sapphire Container



Power Reserve  
Watch Drawing  
and Sapphire Container



Ladies Square Watch Drawing







## Ladies Square Watch Drawing

Diamonds set  
on the Lattice Chassis



## Gran Timer 270

Collection GT 270  
Stainless Steel



**Gran Timer 270**  
**GT 270 Diablo**  
**Ref: BRBR66**

Automatic Self-Winding Chronograph Movement, 28,800 A/H (4Hz) with State of the Art Finish.

Sapphire Front Glass Treated Anti-Reflection and Sapphire See Through Back.

Black Galvanic Dial, Diamond Polished Black-Plated Counters.

Stainless Steel Crown Fitted with a Lacquered "Cabochon".

Stainless Steel Push Pieces.

Stainless Steel Container.

Stainless Steel Chassis.

Carbon Fiber or Leather Strap with Dual Deployant Clasps.



**Gran Timer 270**  
**GT 270 Diablo**  
**Ref: BRBR67**

Automatic Self-Winding Chronograph Movement, 28,800 A/H (4Hz) with State of the Art Finish.  
Sapphire Front Glass Treated Anti-Reflection and Sapphire See Through Back.  
Black Galvanic Dial, Diamond Polished Black-Plated Counters.  
Stainless Steel Crown Fitted with a Lacquered "Cabochon".  
Stainless Steel Push Pieces.  
Stainless Steel Container.  
Black Coated Stainless Steel Chassis.  
Carbon Fiber or Leather Strap with Dual Deployant Clasps.



**Gran Timer 270**  
**GT 270 Diablo**  
**Ref: BRBR76**

Automatic Self-Winding Chronograph Movement, 28,800 A/H (4Hz) with State of the Art Finish.  
Sapphire Front Glass Treated Anti-Reflection and Sapphire See Through Back.  
Black Galvanic Dial, Diamond Polished Black-Plated Counters.  
Stainless Steel Crown Fitted with a Lacquered "Cabochon".  
Stainless Steel Push Pieces.  
Black coated Stainless Steel Container.  
Stainless Steel Chassis.  
Carbon Fiber or Leather Strap with Dual Deployant Clasps.



**Gran Timer 270**  
**GT 270 Silver Arrow**  
**Ref: RBBR66**

Automatic Self-Winding Chronograph Movement, 28,800 A/H (4Hz) with State of the Art Finish.

Sapphire Front Glass Treated Anti-Reflection and Sapphire See Through Back.

Silver Rhodium "Clous de Paris" Dial, Diamond Polished Rhodium-Plated Counters.

Stainless Steel Crown Fitted with a Lacquered "Cabochoon".

Stainless Steel Push Pieces.

Stainless Steel Container.

Stainless Steel Chassis.

Carbon Fiber or Leather Strap with Dual Deployant Clasps.



**Gran Timer 270**  
**GT 270 Silver Arrow**  
**Ref: RBBR67**

Automatic Self-Winding Chronograph Movement, 28,800 A/H (4Hz) with State of the Art Finish.

Sapphire Front Glass Treated Anti-Reflection and Sapphire See Through Back.

Silver Rhodium "Clous de Paris" Dial, Diamond Polished Rhodium-Plated Counters.

Stainless Steel Crown Fitted with a Lacquered "Cabochoon".

Stainless Steel Push Pieces.

Stainless Steel Container.

Black Coated Stainless Steel Chassis.

Carbon Fiber or Leather Strap with Dual Deployant Clasps.





**Gran Timer 270**  
**GT 270 Silver Arrow**  
**Ref: RBBR76**

Automatic Self-Winding Chronograph Movement, 28,800 A/H (4Hz) with State of the Art Finish.

Sapphire Front Glass Treated Anti-Reflection and Sapphire See Through Back.

Silver Rhodium "Clous de Paris" Dial, Diamond Polished Rhodium-Plated Counters.

Stainless Steel Crown Fitted with a Lacquered "Cabochon".

Stainless Steel Push Pieces.

Black Coated Stainless Steel Container.

Stainless Steel Chassis.

Carbon Fiber or Leather Strap with Dual Deployant Clasps.



**Gran Timer 270**  
**GT 270 Laguna Seca**  
**Ref: BRBR66**

Automatic Self-Winding Chronograph  
Movement, 28,800 A/H (4Hz) with  
State of the Art Finish.

Sapphire Front Glass Treated  
Anti-Reflection and Sapphire  
See Through Back.

Lacquered Blue Dial, Diamond  
Polished Black-Plated Counters.

Stainless Steel Crown Fitted with  
a Lacquered "Cabochon".

Stainless Steel Push Pieces.

Stainless Steel Container.

Stainless Steel Chassis.

Carbon Fiber or Leather Strap  
with Dual Deployant Clasps.



**Gran Timer 270**  
**GT 270 Laguna Seca**  
**Ref: BRBR67**

Automatic Self-Winding Chronograph Movement, 28,800 A/H (4Hz) with State of the Art Finish.  
Sapphire Front Glass Treated Anti-Reflection and Sapphire See Through Back.  
Lacquered Blue Dial, Diamond Polished Black-Plated Counters.  
Stainless Steel Crown Fitted with a Lacquered "Cabochon".  
Stainless Steel Push Pieces.  
Stainless Steel Container.  
Black Coated Stainless Steel Chassis.  
Carbon Fiber or Leather Strap with Dual Deployant Clasps.



**Gran Timer 270**  
**GT 270 Laguna Seca**  
**Ref: BRBR76**

Automatic Self-Winding Chronograph Movement, 28,800 A/H (4Hz) with State of the Art Finish.

Sapphire Front Glass Treated Anti-Reflection and Sapphire See Through Back.

Lacquered Blue Dial, Diamond Polished Black-Plated Counters.

Stainless Steel Crown Fitted with a Lacquered "Cabochon".

Stainless Steel Push Pieces.

Black Coated Stainless Steel Container.

Stainless Steel Chassis.

Carbon Fiber or Leather Strap with Dual Deployant Clasps.



## Gran Timer 270

Collection GT 270  
Gold and Stainless Steel



**Gran Timer 270**  
**GT 270 Diablo**  
**Ref: RBR464**

Automatic Self-Winding Chronograph Movement, 28,800 A/H (4Hz) with State of the Art Finish.  
Sapphire Front Glass Treated Anti-Reflection and Sapphire See Through Back.  
Black Galvanic Dial, Diamond Polished Rhodium-Plated Counters.  
Stainless Steel Crown Fitted with a Lacquered "Cabochon".  
Stainless Steel Push Pieces.  
Stainless Steel Container.  
18kt Rose Gold Chassis.  
Carbon Fiber or Leather Strap with Dual Deployant Clasps.



**Gran Timer 270**  
**GT 270 Colin's Special**  
**Ref: 4BBR74**

Automatic Self-Winding Chronograph Movement, 28,800 A/H (4Hz) with State of the Art Finish.  
Sapphire Front Glass Treated Anti-Reflection and Sapphire See Through Back.  
Rose Gold "Clous de Paris" Dial, Diamond Polished Rose Gold-Plated Counters.  
Stainless Steel Crown Fitted with a Lacquered "Cabochoon".  
Stainless Steel Push Pieces.  
Black Coated Stainless Steel Container.  
18kt Rose Gold Chassis.  
Carbon Fiber or Leather Strap with Dual Deployant Clasps.





**Gran Timer 270**  
**GT 270 Laguna Seca**  
**Ref: BRBR61**

Automatic Self-Winding Chronograph Movement, 28,800 A/H (4Hz) with State of the Art Finish.

Sapphire Front Glass Treated Anti-Reflection and Sapphire See Through Back.

Lacquered Blue Dial, Diamond Polished Black-Plated Counters.

Stainless Steel Crown Fitted with a Lacquered "Cabochon".

Stainless Steel Push Pieces.

Stainless Steel Container.

18kt White Gold Chassis.

Carbon Fiber or Leather Strap with Dual Deployant Clasps.

## Ladies Jewelry Collection

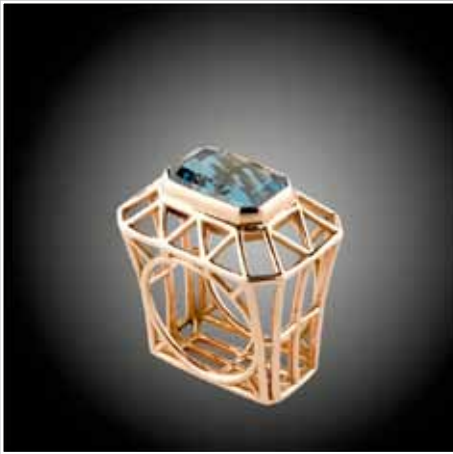


## Ladies Jewelry Barchetta Ring Collection

Barchetta Rose Gold Ring  
Blue Sapphire Stone

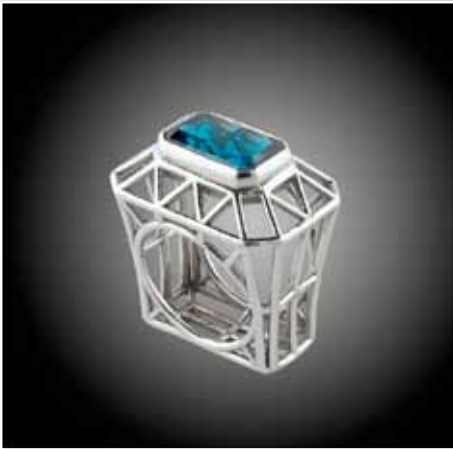


Barchetta White Gold Ring  
Ruby Stone



Ladies Jewelry  
Triomphe Eiffel Ring Collection

Triomphe Eiffel Rose Gold Ring  
Blue London Topaz Stone



Triomphe Eiffel White Gold Ring  
Blue London Topaz Stone



**Men Jewelry**  
**GT 270 Ring Collection**

GT 270 Rose Gold Ring  
Blue Spinel Stone



GT 270 White Gold Ring  
Onyx Stone



Rue des Rasses 28  
1450 Sainte-Croix  
Switzerland  
[www.josephkaspar.com](http://www.josephkaspar.com)  
[info@josephkaspar.com](mailto:info@josephkaspar.com)